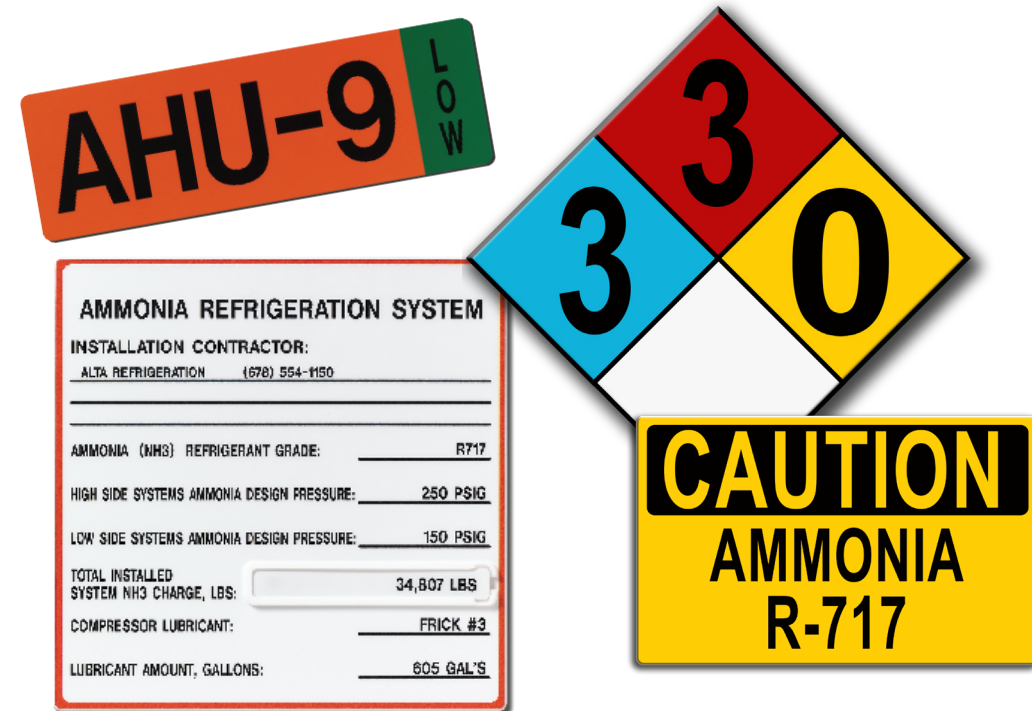


Why MSI?

Proper labeling has an impact on the reliable and safe operation of new food and beverage facilities or upgraded existing plants. When you invest in the world-class quality and expertise of our mechanical labeling, you gain significant returns on protecting the productivity of your plant for years to come.

We are dedicated to providing an unmatched level of service and highly engineered products that advance the industry's standards. Our customers depend on our experienced team of ammonia refrigeration specialists to accurately identify, manufacture and install a complete collection of legible and extremely durable labels, tags and signs for the most complex ammonia refrigeration systems all in one easy turnkey process. So you can focus on what's important - running your operation.

Contact us today for answers to your material questions. We'll help you choose the right materials and services for all your ammonia refrigeration piping and system component needs.



Your Single Source for All Plant Labeling

ENGINEERING ➡ **MANUFACTURING** ➡ **INSTALLATION**
MAINTENANCE ➡ **P&ID UPDATES**

We have invested in state-of-the-art facilities to provide labeling services wherever our customers do business. Our service and sales staff supports process labeling and asset identification needs with a commitment to create safer, more efficient facilities.

Want to learn more about us? Scan the QR code below



Marking Services Incorporated

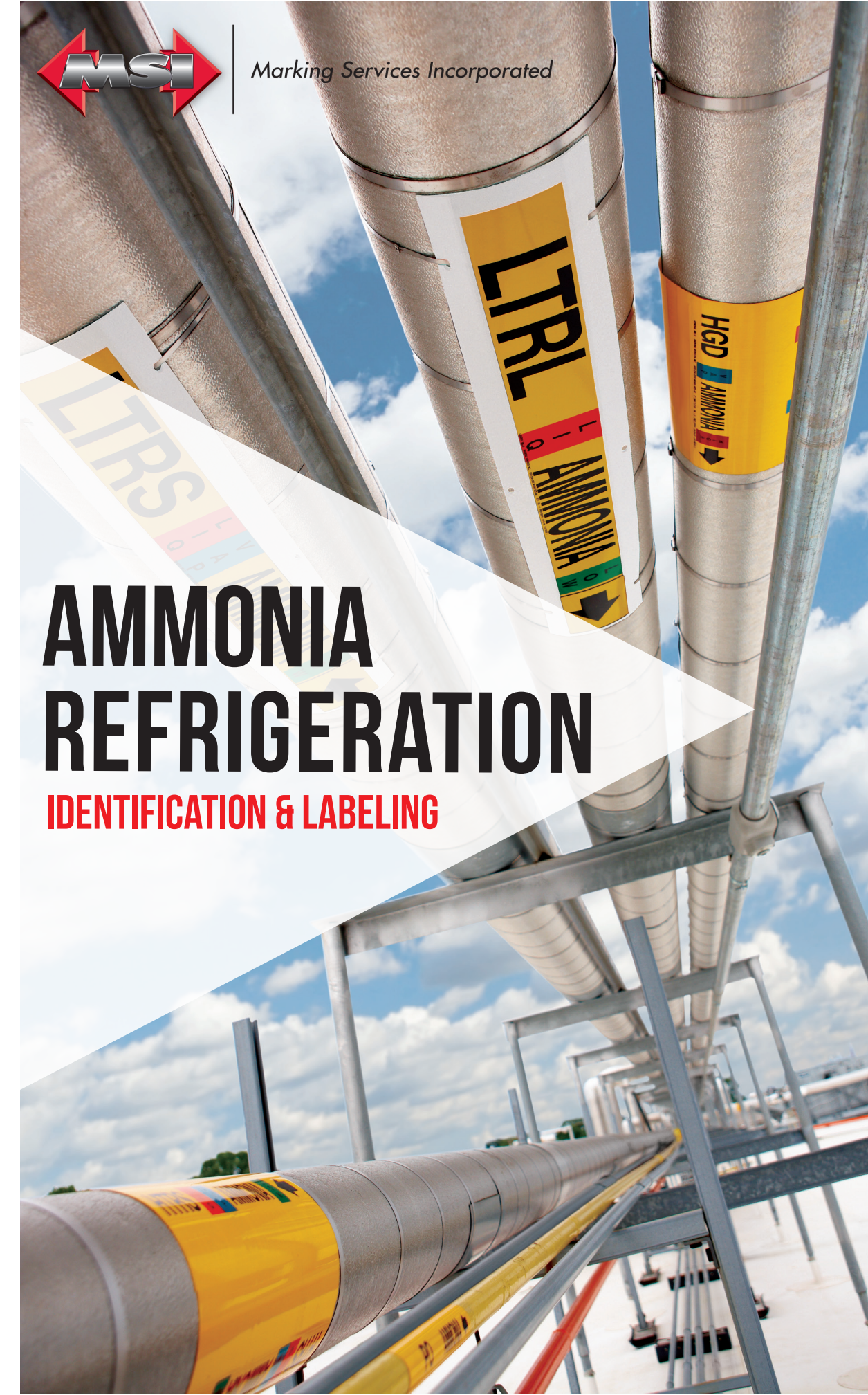
• Ph: 414.973.1331 • sales@markserv.com
8265 N. Faulkner Road • Milwaukee, WI 53224 • www.markserv.com



Marking Services Incorporated

AMMONIA REFRIGERATION

IDENTIFICATION & LABELING

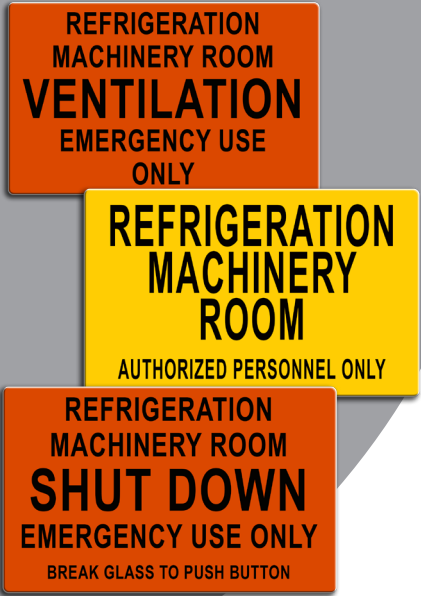


Today’s Most Advanced Products Engineered for Visibility & Durability

Principal and Auxiliary Door Signs

We offer auxiliary and principal door signs for placement at all entrances to machinery rooms. Our identification signs are specifically designed to provide a clear hazard warning for employees in food processing plants and cold storage facilities.

The extreme environments of food and beverage processing facilities require signage that can withstand prolonged exposure to extreme operating conditions without fading, deteriorating or failing. We manufacture a wide variety of signage specifically designed to meet the needs of the industry.



Component Markers

Our component markers meet IIAR bulletin 114 recommendations to ensure your equipment is labeled efficiently. We offer both orange and yellow markers, in a variety of sizes, materials and mounting methods based on the individual needs of your company and equipment. We offer standard component markers as well as custom markers if you would like additional information included to best label your facility.

Safety Ammonia Markers

We provide a full range of highly legible and durable safety orange or yellow labels, tags and signage designed to meet the International Institute of Ammonia Refrigeration (IIAR) Bulletin 114 modified color scheme.

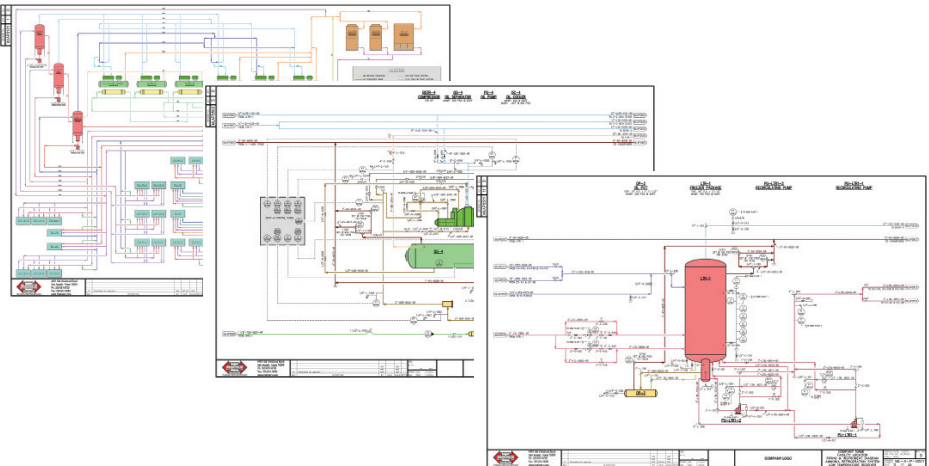
Our materials are specifically engineered and manufactured for the extreme conditions of the Ammonia Refrigeration Industry. Our pipe labels are the highest quality materials available, made to withstand harsh environmental conditions.



P&IDs

We take a step beyond simply providing exceptional plant labeling systems. Developing accurate Piping and Instrumentation Diagrams (P&IDs) — drawings that are developed and generated in a well-planned, organized, and concise manner. These create a valuable tool to convey necessary information for engineering, maintenance, and safety personnel at your facility.

Accurate P&IDs allow us to determine the proper in-plant location for each marker, sign, and tag. We then manufacture and install all required labeling materials. Our single source turnkey process guarantees that your plant labeling will match your P&IDs.



Don’t Risk Employee Health & Safety

Deteriorating plant labeling is ineffective and can be hazardous. Make certain your facility is not only up to code, but providing all the information needed to keep your employees safe and your plant operating at the highest level. If you see these warning signs of improper installation or illegible markers, pick up the phone and give us a call at 414-973-1331.



GHS (Globally Harmonized System) Signs & Labels

Going beyond what is required, we allow owners ability to include relevant information for the safe, efficient operations of their facilities. We have worked with OSHA to develop GHS compliant signs and labels that accurately communicate hazards for the protection of plant workers and infrastructure.

GHS signs and labels identify health, physical and environmental risk hazards; information critical to keeping your workplace compliant and safe. Standardized pictograms, signal words and hazard/precautionary statements used on our GHS signs and labels keep workers informed of specific chemical hazards and comply with GHS regulations.

Our process is simple and we work with you to determine your plant specific needs.

Valve Tagging

We offer a wide variety of valve tags for many types of identification needs. Our high quality tags are built to withstand harsh conditions and can be seamlessly integrated with our mobile technology. Material options include; anodized aluminum, engraved plastic, brass, stainless steel, and MS-215, all of which allow for customizations.

Demanding Environments Require Serious Products

We improve and standardize the identification of pipe contents to promote safer work environments and minimize downtime due to errors or accidents. We provide a full complement of identification products designed to fulfill all needs for identification in nearly any environment.

Through our commitment to providing value-added services, high-quality products and on-time delivery, we offer you a one-stop comprehensive source for all your identification needs.

